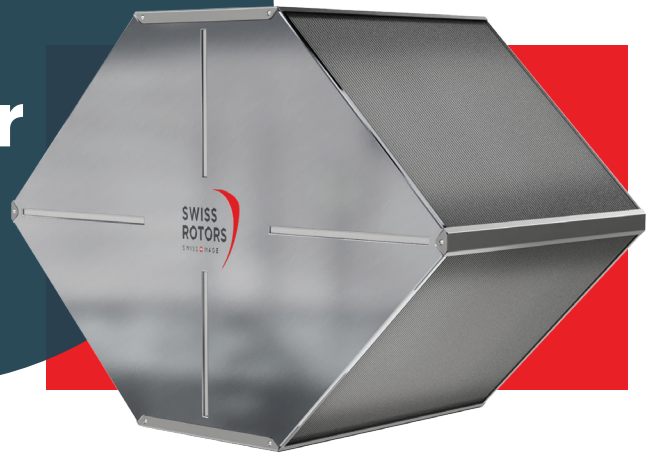


Counterflow Heat Exchanger



About the product

Counterflow heat exchanger is the most efficient sensible energy recovery system. The choice of fin spacing is provided for either higher efficiency (0.08") or minimal pressure loss (0.12") to match the application requirements. In addition to popular aluminum exchangers SwissRotors offers exchangers with a core made of polymer.

Features and benefits



A unique plate design
Maximum efficiency with an optimal pressure drop. Construction ensures the separation of the air streams - the air quality.

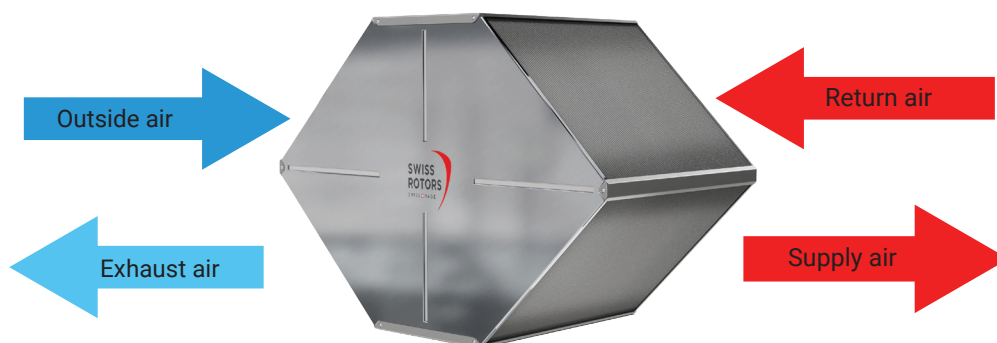


High efficiency
The highest air tightness due to the double-folded edges in aluminum core and ultrasonic welding in polymer exchanger.



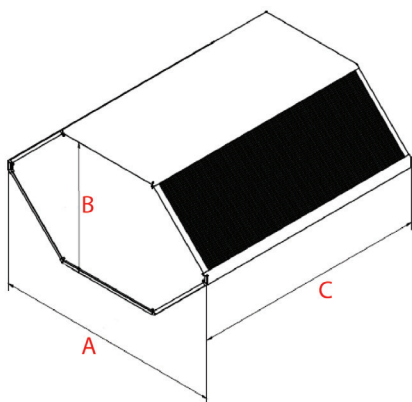
Fully Certified

Independently tested and certified according to Hygienic norms VDI 6022, SWKI VA104-01 and Eurovent. 100% of exchangers are tested for air tightness to ensure best quality product according to EN308.



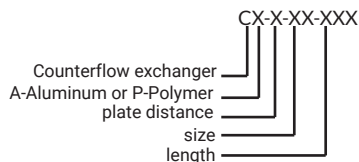
Product range

Swiss Rotors counterflow heat exchangers sizes are compatible with industry standards.



Swiss Rotors Model	Material	Plate distance in	A in	B in	C in
CA-2-27	Alu	0.08	19.5	10.6	8.5÷31.5
CA-2-31	Alu	0.08	21	12.2	8.5÷31.5
CA-3-31	Alu	0.12	21	12.2	8.5÷31.5
CA-2-39	Alu	0.08	24.3	15.5	8.5÷31.5
CA-3-48	Alu	0.12	27.6	19	8.5÷27.5
CA-2-53	Alu	0.08	29.8	21	8.5÷27.5
CP-2-31	Polymer	0.08	21	12.2	8.5÷31.5
CP-3-31	Polymer	0.12	21	12.2	8.5÷31.5
CP-2-39	Polymer	0.08	24.3	15.5	8.5÷31.5
CP-3-39	Polymer	0.12	24.3	15.5	8.5÷31.5

*data and dimensions may be changed please contact for the individual drawing and data



**Swiss Quality
Best Price
2 Weeks Lead
Time**

Switzerland

Eichengasse 3
4702 Oensingen
+41 43 508 94 75
info@swissrotors.com

USA

3535 Gravel Springs Road Ext.
Suite 203, Buford, Georgia
+1 470 231 0900
info@swissrotors.com

UAE

RA07AA05 LIU15, R-BOUT 7
Jebel Ali – Dubai
+971 50 167 1763
info@swissrotors.com

Poland

8c Sportowa St.
81-300 Gdynia
+48 58 881 13 00
info@swissrotors.com