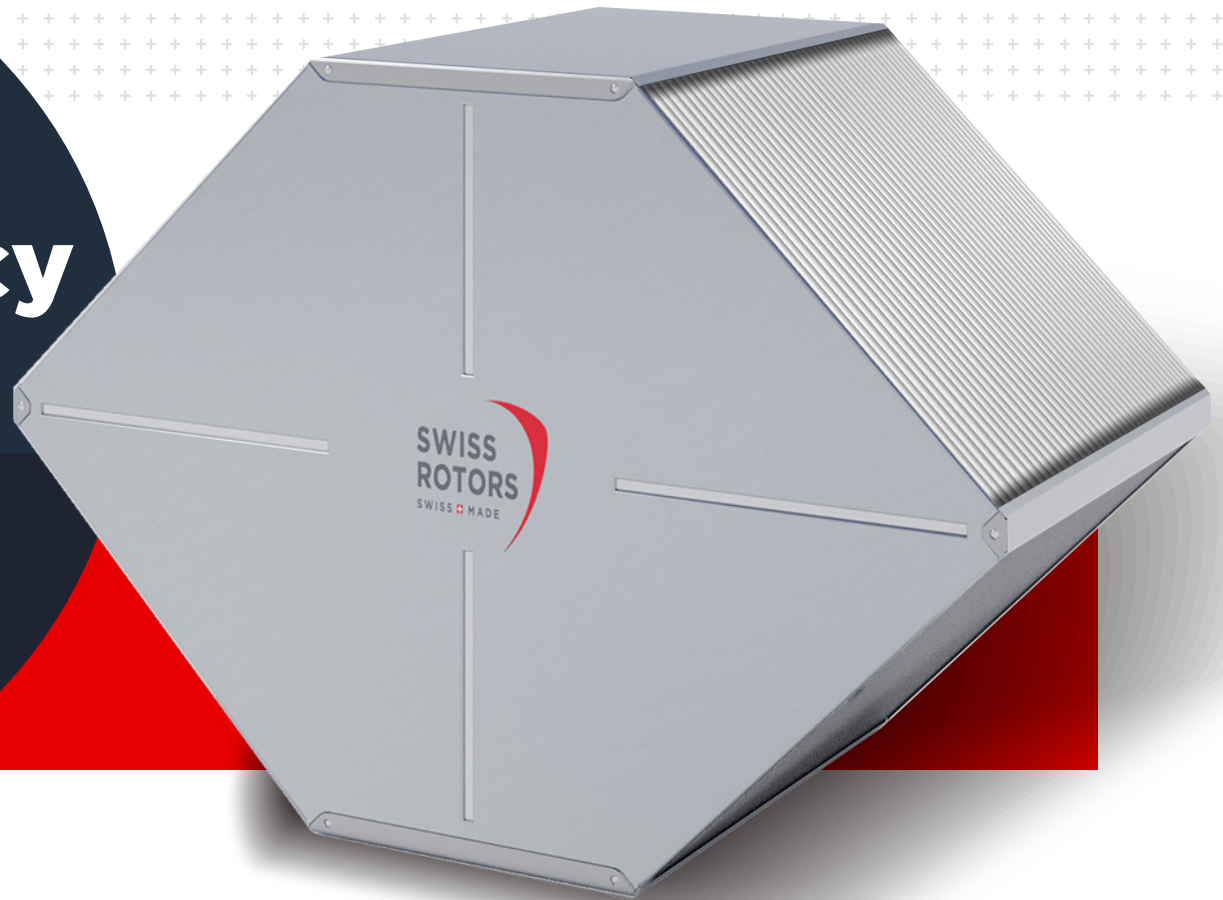


**SWISS  
ROTORS**

**High efficiency  
polymer heat  
exchanger**



# Features and benefits



Featherlight weight



Ultrasonically welded plates



Each of exchangers are EN-308 tested



Only 2 weeks lead time



High efficiency up to 84%



Plates made of HIPS

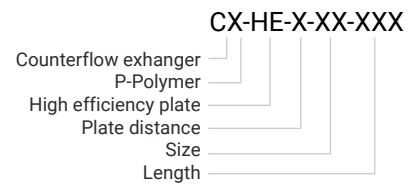
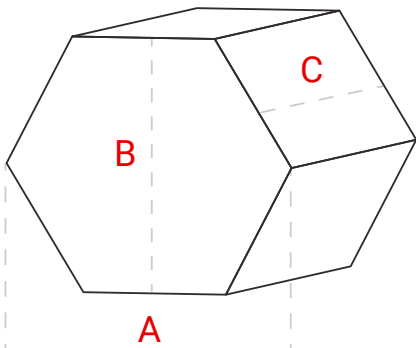


High quality



Best price

Swiss Rotors Model	Material	Plate distance mm	A mm	B mm	C mm
CP-HE-2-31	Polymer	2	535	310	225 ÷ 800
CP-HE-2-39	Polymer	2	535	310	225 ÷ 800
CP-HE-3-39	Polymer	3	535	310	225 ÷ 800



Dependence of efficiency on airflow velocity for counterflow heat exchangers.