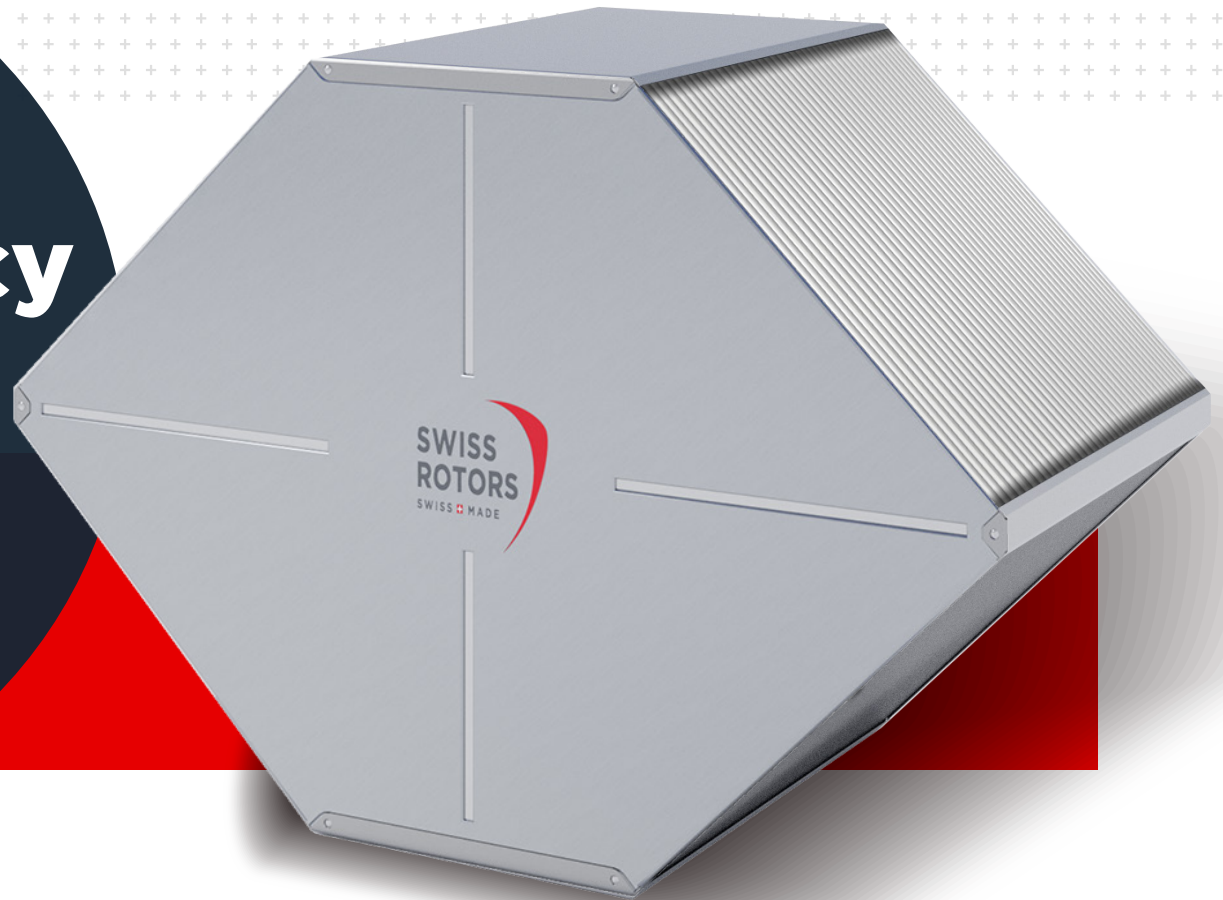


**SWISS
ROTORS**


**High efficiency
polymer heat
exchanger**





Features and benefits





 Featherlight weight

 Ultrasonically welded plates

 Each of exchangers are EN-308 tested

 Only 2 weeks lead time

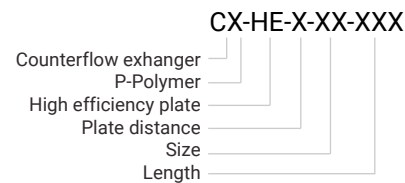
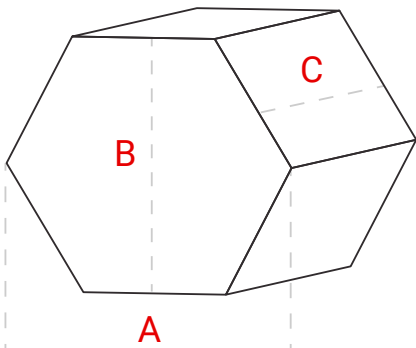
 High efficiency up to 84%

 Plates made of HIPS

 High quality

 Best price

Swiss Rotors Model	Material	Plate distance mm	A mm	B mm	C mm
CP-HE-2-31	Polymer	2	535	310	225 ÷ 800
CP-HE-3-31	Polymer	3	535	310	225 ÷ 800
CP-HE-2-39	Polymer	2	535	310	225 ÷ 800
CP-HE-3-39	Polymer	3	535	310	225 ÷ 800



Dependence of efficiency on airflow velocity for counterflow heat exchangers.