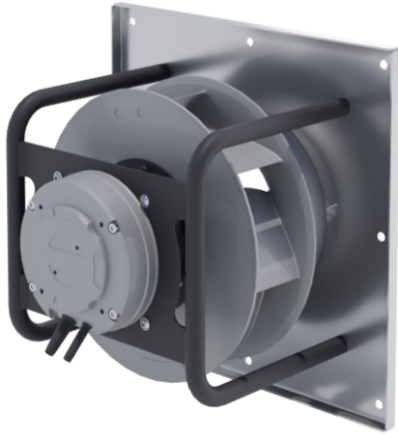


SR-FS-A-355-## Backward Curved Fan set

Technical Specification*



Application

- Various systems of mechanical ventilation,
- Primary Air Movement units for Air Handling Units, Roof Top Units and other,
- Ventilation systems requiring low Specific Fan Power (SFP) together with smooth and precise airflow adjustment,
- Perfect solution to be combined into Fan-Array systems,
- Fitted for Vertical and Horizontal Arrangement.

General Specification

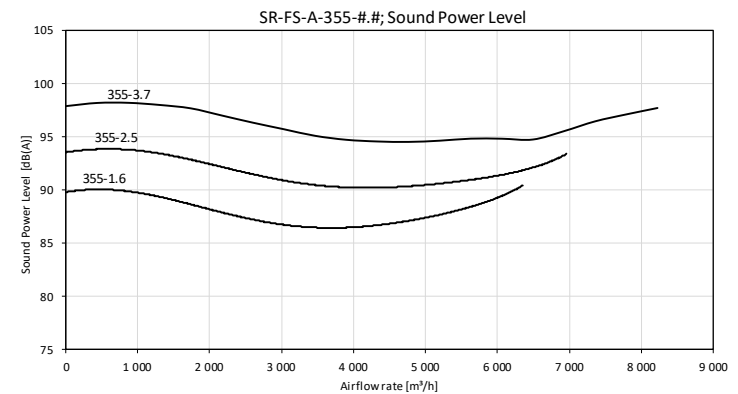
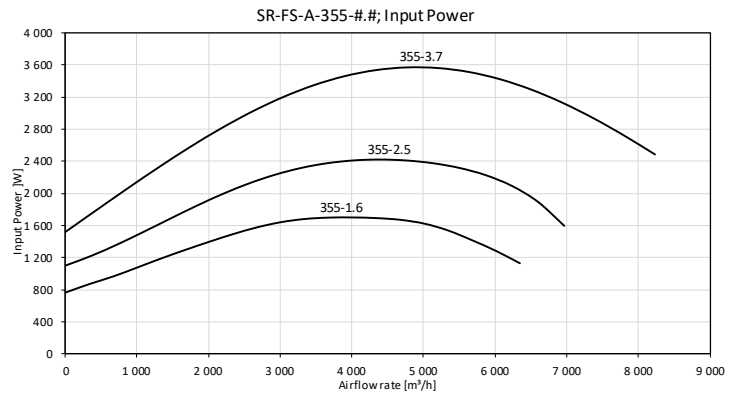
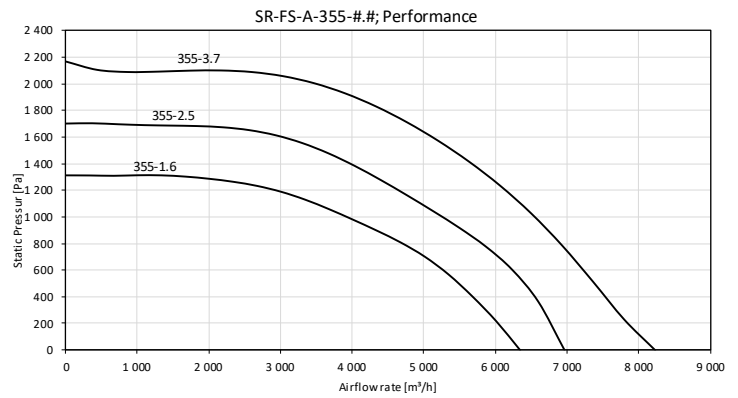
- Fully assembled EC Fan set,
- Support to CAV/VAV systems (factory mounted static pressure probes on fan inlet vane + precisely determined K-factor),
- Air performance according to ISO 5801, Installation Category: A, L_wA according to ISO 13347.

Housing

- Front Plate: Hot-dip galvanized steel (DX51D+Z275),
- Motor supporting bracket: Painted low carbon steel,
- Inlet vane: Hot-dip galvanized steel.

Impeller

- Type: Radial, Backward-curved, Single Inlet,
- Material: High Performance Aluminum (A),
- Balance quality grade: G 6,3 (ISO 1940-1) and BV-3 (ANSI S2.19-1989)



Motor

- Type: Electronically Commutated, Spinning Stator,
- Housing: Die-cast aluminum,
- Protection Degree: IP54,
- Overload Protection: Inbuilt Thermal Limit,
- Speed Control: 0~10VDC / Modbus RTU,
- Bearing: Ball Type.

FanSet Model	Power supply			Revolutions [min ⁻¹]		Efficiency		Reference standards			CAV K-factor	Weight
	Rated Voltage	Rated Current	Input Power	Min	Max/Nominal	Static	FEI	ErP	CE	UL		
SR-FS-A-355-1.6	3x380-480 VAC / 50-60 Hz	2,6 A	1,7 kW	300	2 650	64%	85	2018	Yes	Yes	128,0	20,3 kg
SR-FS-A-355-2.5	3x380-480 VAC / 50-60 Hz	3,6 A	2,4 kW	300	3 000	64%	85	2018	Yes	Yes	127,0	21,9 kg
SR-FS-A-355-3.7	3x380-480 VAC / 50-60 Hz	5,4 A	3,6 kW	340	3 400	64%	85	2018	Yes	Yes	127,0	30,0 kg

FanSet Model	Dimensions [mm]								
	A	B	C	D	E	F	G	H	ø
SR-FS-A-355-1.6	360	313	406	20	500	461	373	N/A	9
SR-FS-A-355-2.5	379	332	406	20	500	461	373	N/A	9
SR-FS-A-355-3.7	394	328	406	20	500	461	373	N/A	9

