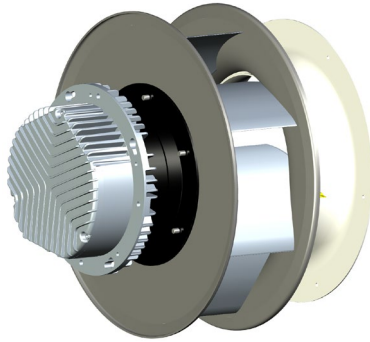


# SR-MI-A-315-## Backward Curved Motorized Impeller

## Technical Specification\*



### Application

- Various systems of mechanical ventilation,
- Primary Air Movement units for Air Handling Units, Roof Top Units and other,
- Ventilation systems requiring low Specific Fan Power (SFP) together with smooth and precise airflow adjustment,
- Perfect solution to be combined into Fan-Array systems,
- Fitted for Vertical and Horizontal Arrangement.

### General Specification

- Motorized impeller with separate inlet funnel,
- Support to CAV/VAV systems (factory mounted static pressure probes on fan inlet vane + precisely determined K-factor),
- Air performance according to ISO 5801, Installation Category: A, L<sub>w</sub>A according to ISO 13347.

### Impeller

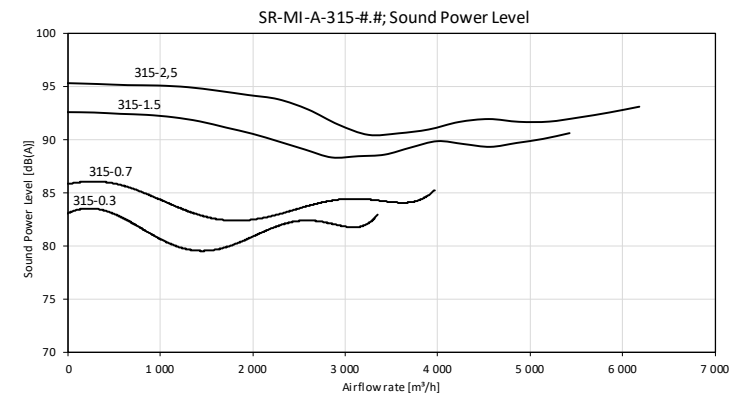
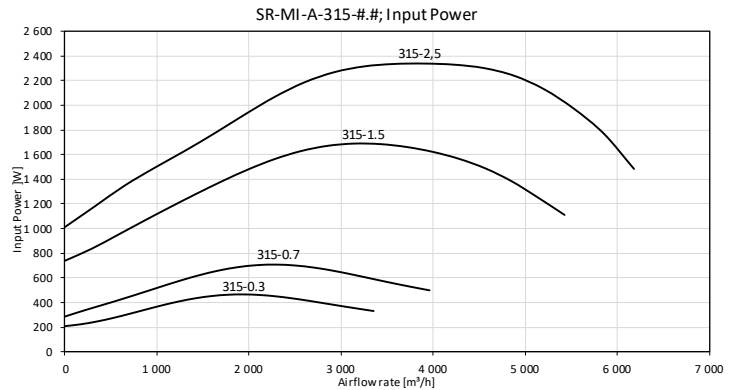
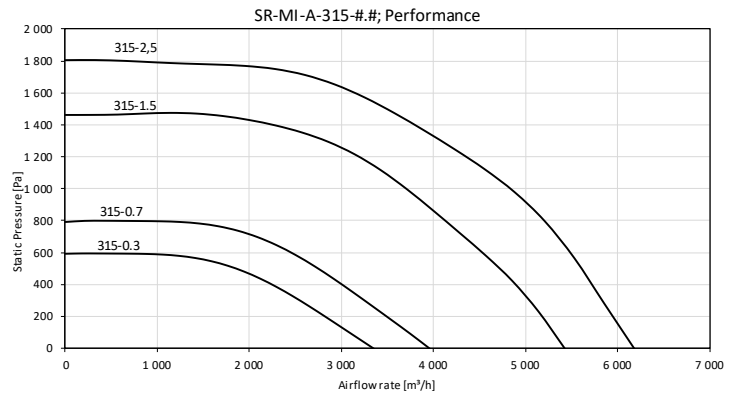
- Type: Radial, Backward-curved, Single Inlet,
- Material: High Performance Aluminum (A),
- Balance quality grade: G 6,3 (ISO 1940-1) and BV-3 (ANSI S2.19-1989)

### Inlet funnel

- Material: Hot-dip galvanized steel.

### Motor

- Type: Electronically Commutated, Spinning Stator,
- Housing: Die-cast aluminum,
- Protection Degree: IP54,
- Overload Protection: Inbuilt Thermal Limit,
- Speed Control: 0~10VDC / Modbus RTU,
- Bearing: Ball Type.



FanSet Model	Power supply			Revolutions [min <sup>-1</sup> ]		Efficiency		Reference standards			CAV K-factor	Weight
	Rated Voltage	Rated Current	Input Power	Min	Max/Nominal	Static	FEG	ErP	CE	UL		
SR-MI-A-315-0.3	1x230 VAC / 50-60 Hz	3.0 A	0.5 kW	300	2 060	56%	80	2018	Yes	Yes	90.3	4.9 kg
SR-MI-A-315-0.7	1x230 VAC / 50-60 Hz	5.7 A	0.7 kW	300	2 400	59%	85	2018	Yes	Yes	94.4	6.5 kg
SR-MI-A-315-1.5	3x380-480 VAC / 50-60 Hz	2.9 A	1.7 kW	325	3 250	63%	85	2018	Yes	Yes	92.1	9.8 kg
SR-MI-A-315-2.5	3x380-480 VAC / 50-60 Hz	3.8 A	2.3 kW	370	3 700	63%	85	2018	Yes	Yes	96.5	10.7 kg

Model	A-315-0.3	A-315-0.7	A-315-1.5	A-315-2.5
A	133	153	210	NA
B	114	150	168	210
C	310	310	310	310
D	358	358	358	358
E	265	295	323	346
F	232	247	268	291
G	145	145	145	145
H	178	193	214	237
I	125	164	186	186

