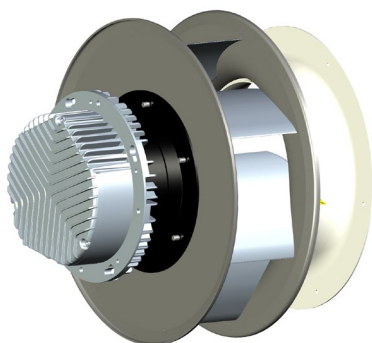


# SR-MI-A-450-## Backward Curved Motorized Impeller

## Technical Specification\*



### Application

- Various systems of mechanical ventilation,
- Primary Air Movement units for Air Handling Units, Roof Top Units and other,
- Ventilation systems requiring low Specific Fan Power (SFP) together with smooth and precise airflow adjustment,
- Perfect solution to be combined into Fan-Array systems,
- Fitted for Vertical and Horizontal Arrangement.

### General Specification

- Motorized impeller with separate inlet funnel,
- Support to CAV/VAV systems (factory mounted static pressure probes on fan inlet vane + precisely determined K-factor),
- Air performance according to ISO 5801, Installation Category: A, L<sub>w</sub>A according to ISO 13347.

### Impeller

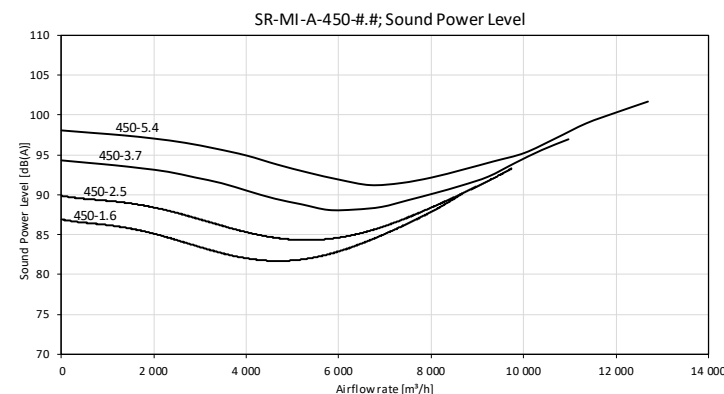
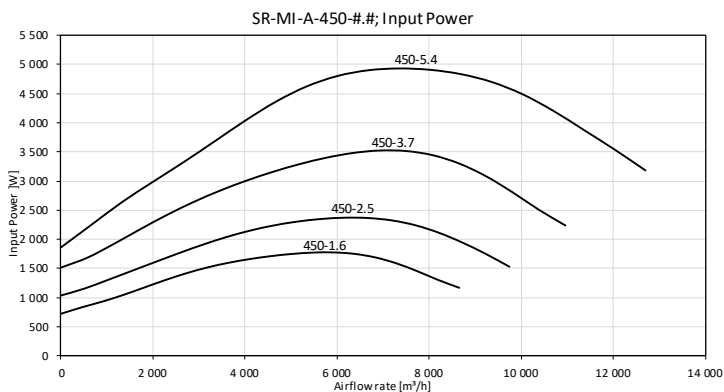
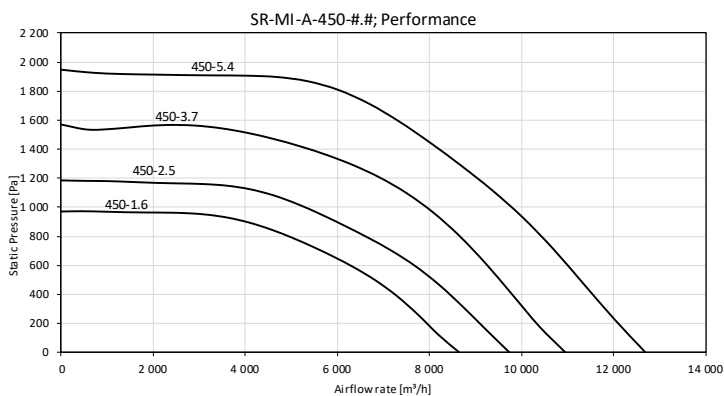
- Type: Radial, Backward-curved, Single Inlet,
- Material: High Performance Aluminum (A),
- Balance quality grade: G 6,3 (ISO 1940-1) and BV-3 (ANSI S2.19-1989)

### Inlet funnel

- Material: Hot-dip galvanized steel.

### Motor

- Type: Electronically Commutated, Spinning Stator,
- Housing: Die-cast aluminum,
- Protection Degree: IP54,
- Overload Protection: Inbuilt Thermal Limit,
- Speed Control: 0~10VDC / Modbus RTU,
- Bearing: Ball Type.



| FanSet Model    | Power supply             |               |             | Revolutions [min <sup>-1</sup> ] |             | Efficiency |     | Reference standards |     |     | CAV K-factor | Weight  |
|-----------------|--------------------------|---------------|-------------|----------------------------------|-------------|------------|-----|---------------------|-----|-----|--------------|---------|
|                 | Rated Voltage            | Rated Current | Input Power | Min                              | Max/Nominal | Static     | FEG | ErP                 | CE  | UL  |              |         |
| SR-MI-A-450-1.6 | 3x380-480 VAC / 50-60 Hz | 2.6 A         | 1.8 kW      | 300                              | 1 800       | 63%        | 80  | 2018                | Yes | Yes | 206.0        | 17.9 kg |
| SR-MI-A-450-2.5 | 3x380-480 VAC / 50-60 Hz | 3.6 A         | 2.4 kW      | 300                              | 2 000       | 64%        | 80  | 2018                | Yes | Yes | 206.0        | 29.7 kg |
| SR-MI-A-450-3.7 | 3x380-480 VAC / 50-60 Hz | 5.2 A         | 3.5 kW      | 300                              | 2 300       | 66%        | 85  | 2018                | Yes | Yes | 205.0        | 29.7 kg |
| SR-MI-A-450-5.4 | 3x380-480 VAC / 50-60 Hz | 7.4 A         | 4.9 kW      | 325                              | 2 550       | 66%        | 85  | 2018                | Yes | Yes | 206.0        | 31.7 kg |

| Model | A-450-1.6 | A-450-2.5 | A-450-3.7 | A-450-5.4 |
|-------|-----------|-----------|-----------|-----------|
| A     | 210       | 270       | 270       | 270       |
| B     | 168       | 230       | 230       | 230       |
| C     | 464       | 464       | 464       | 464       |
| D     | 515       | 515       | 515       | 515       |
| E     | 395       | 435       | 466       | 466       |
| F     | 340       | 360       | 391       | 391       |
| G     | 204       | 204       | 204       | 204       |
| H     | 319       | 284       | 314       | 314       |
| I     | 186       | 252       | 252       | 252       |

